

GERHARD SCHUTTE & SAMUEL CHURCH SMITH



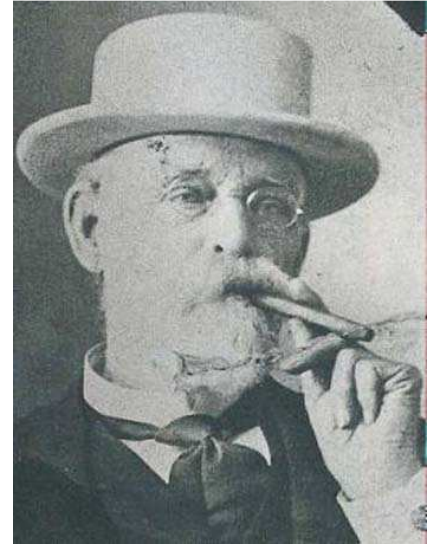
GERHARD SCHUTTE

Responding to railroad land advertisements, Schutte came west in 1886 to build a town. His elaborate Queen Anne - style family home now is Neiman's Restaurant.



CARLSBAD HOTEL

Schutte and Smith built this hotel in 1887 but it burned down in 1894.



SAMUEL CHURCH SMITH

Schutte's partner in the Carlsbad Land and Mineral Company built a simple cottage for his family on Beech Ave.



SMITH FAMILY AT HOME

Bad economic times forced Smith to move to San Diego in the early 90s.



CARLSBAD SCHOOL

Teacher Hattie Reece, back row, right, married Gerhard Schutte's son Alfred. Florence Shipley attended this school in 1887.